
Product Datasheet

MYD88 antibody (orb420074)

Description

MYD88 antibody

Species/Host

Rabbit

Reactivity


Guinea pig, Human, Mouse, Rat

Conjugation

Unconjugated

Tested

IHC-P, WB

Applications


 Immunohistochemical staining of Guinea p...

Immunogen

KLH conjugated synthetic peptide derived from human MYD88. Please contact us for the exact immunogen sequence.

Target

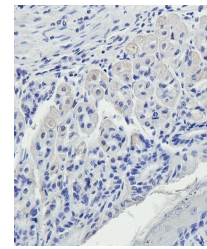
MYD88

Form/Appearance

10 mM PBS, 0.02% sodium azide

Concentration

- 100 µg (in 200 µl): 0.5 mg/ml- 200 µg (in 400 µl): 0.5 mg/ml



IHC-P staining of mouse stomach tissue u...

Storage

Store at 4°C for up to two weeks. For long term storage, aliquot and store at -20°C, avoid freeze/thaw cycles.

Note

For research use only

Isotype

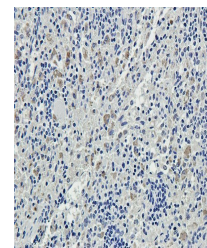
IgG

Clonality

Polyclonal

Purity

Polyclonal antibodies are purified by peptide affinity chromatography



Immunohistochemical staining of rat sple...

MW

33 kDa

Uniprot ID
[P22366](#), [Q6Y1S1](#), [Q99836](#)
NCBI
[001166037](#), [001172566](#)
Entrez
[4615](#)
Dilution Range

IHC-P: 1:100-300, WB: 1:100-500

Expiration Date

12 months from date of receipt.