
Product Datasheet

MMP7 antibody (orb420072)

Description

MMP7 antibody

Species/Host

Rabbit

Reactivity

Guinea pig, Human, Mouse, Rat

Conjugation

Unconjugated

Tested Applications

IHC-P, WB

Immunogen

KLH conjugated synthetic peptide derived from human MMP7. Please contact us for the exact immunogen sequence.

Target

MMP7

Form/Appearance

10 mM PBS, 0.02% sodium azide

Concentration

- 100 µg (in 200 µl): 0.5 mg/ml & - 200 µg (in 400 µl): 0.5 mg/ml

Storage

Store at 4°C for up to two weeks. For long term storage, aliquot and store at -20°C, avoid freeze/thaw cycles.

Note

For research use only

Isotype

IgG

Clonality

Polyclonal

Purity

Polyclonal antibodies are purified by peptide affinity chromatography

MW

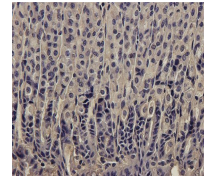
30 kDa

Uniprot ID
[P09237](#), [Q10738](#)
NCBI
[002414](#), [002423](#)
Entrez
[4316](#)
Dilution Range

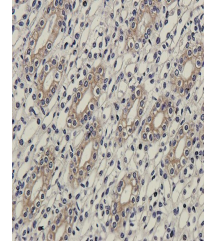
IHC-P: 1:100-600, WB: 1:200-1000

Expiration Date

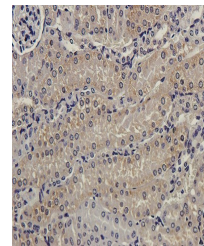
12 months from date of receipt.



Immunohistochemical staining of paraffin...



IHC-P image of Guinea pig kidney tissue ...



IHC-P staining of Guinea pig kidney tiss...