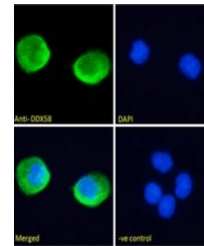


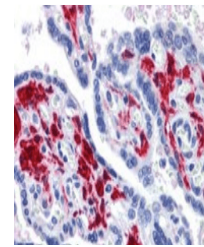
## Product Datasheet

### DDX58 antibody (orb420060)

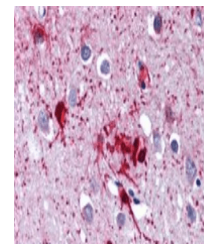
<b>Description</b>	Goat polyclonal antibody to DDX58
<b>Species/Host</b>	Goat
<b>Reactivity</b>	Human, Mouse
<b>Conjugation</b>	Unconjugated
<b>Tested Applications</b>	ELISA, FC, IF, IHC
<b>Target</b>	DDX58
<b>Preservatives</b>	Supplied at 0.5 mg/ml in Tris saline, 0.02% sodium azide, pH 7.3 with 0.5% bovine serum albumin. Aliquot and store at -20°C. Minimize freezing and thawing.
<b>Storage</b>	Aliquot and store at -20°C. Minimize freezing and thawing.
<b>Note</b>	For research use only
<b>Application notes</b>	IHC: Paraffin embedded Human Spleen, Placenta, and Brain (Cortex). Recommended concentration: 3.75µg/ml.. Notes: Immunofluorescence: Strong expression of the protein seen in the cytoplasm of A431 and HeLa cells. Recommended concentration: 10µg/ml. Flow Cytometry: Flow cytometric analysis of U937 cells. Recommended concentration:
<b>Protein Sequence</b>	KDFHFEEKIPFDPAE
<b>Clonality</b>	Polyclonal
<b>MW</b>	107
<b>Entrez</b>	<b>23586</b>
<b>Dilution Range</b>	ELISA: 1:32000, IHC-P: 3.75 µg/ml
<b>Expiration Date</b>	12 months from date of receipt.



Immunofluorescence analysis of paraforma...



Immunohistochemical staining of Human Pl...



Immunohistochemical staining of Human Co...