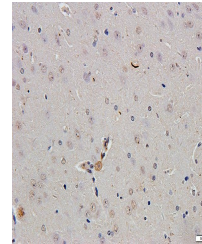


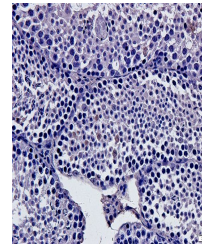
Product Datasheet

ABL2 antibody (orb420042)

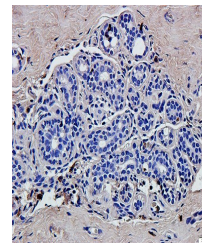
Description	ABL2 antibody
Species/Host	Rabbit
Reactivity	Guinea pig, Human, Mouse, Rat
Conjugation	Unconjugated
Tested Applications	IHC-P
Immunogen	KLH conjugated synthetic peptide derived from human ABL2. Please contact us for the exact immunogen sequence.
Target	ABL2
Form/Appearance	10 mM PBS, 0.02% sodium azide
Concentration	- 100 µg (in 200 µl): 0.5 mg/ml- 200 µg (in 400 µl): 0.5 mg/ml
Storage	Store at 4°C for up to two weeks. For long term storage, aliquot and store at -20°C, avoid freeze/thaw cycles.
Note	For research use only
Isotype	IgG
Clonality	Polyclonal
Purity	Polyclonal antibodies are purified by peptide affinity chromatography
MW	128 kDa
Uniprot ID	F1M0N1 , Q4JIM5 , P42684
Entrez	27
Dilution Range	IHC-P: 1:50-500
Expiration Date	12 months from date of receipt.



Immunohistochemical staining of rat brai...



Immunohistochemical staining of paraffin...



IHC-P image of human breast cancer tissu...