
Product Datasheet

NEFH antibody (orb420036)

Description

NEFH antibody

Species/Host

Rabbit

Reactivity

Guinea pig, Mouse, Rat

Conjugation

Unconjugated

Tested Applications

IHC-P, WB

Immunogen

KLH conjugated synthetic peptide derived from human NEFH. Please contact us for the exact immunogen sequence.

Target

NEFH

Form/Appearance

10 mM PBS, 0.02% sodium azide

Concentration

- 100 µg (in 200 µl): 0.5 mg/ml- 200 µg (in 400 µl): 0.5 mg/ml

Storage

Store at 4°C for up to two weeks. For long term storage, aliquot and store at -20°C, avoid freeze/thaw cycles.

Note

For research use only

Isotype

IgG

Clonality

Polyclonal

Purity

Polyclonal antibodies are purified by peptide affinity chromatography

MW

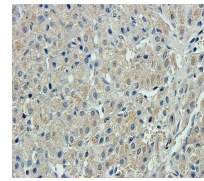
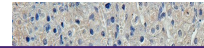
112 kDa

Uniprot ID
[P12036](#), [P16884](#), [P19246](#)
NCBI
[021076](#), [066554](#)
Entrez
[4744](#)
Dilution Range

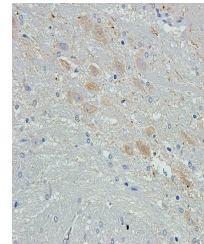
IHC-P: 1:50-500

Expiration Date

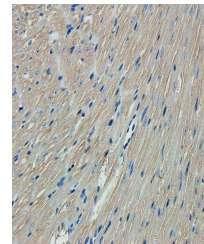
12 months from date of receipt.



Immunohistochemical staining of rat ovar...



Immunohistochemical staining of paraffin...



IHC-P image of mouse heart tissue using ...