
Product Datasheet

ARL13B antibody (orb420033)

Description

ARL13B antibody

Species/Host

Rabbit

Reactivity

Human, Rat

Conjugation

Unconjugated

Tested Applications

IHC-P, WB

Immunogen

KLH conjugated synthetic peptide derived from human ARL13B. Please contact us for the exact immunogen sequence.

Target

ARL13B

Form/Appearance

10 mM PBS, 0.02% sodium azide

Concentration

- 100 µg (in 200 µl): 0.5 mg/ml- 200 µg (in 400 µl): 0.5 mg/ml

Storage

Store at 4°C for up to two weeks. For long term storage, aliquot and store at -20°C, avoid freeze/thaw cycles.

Note

For research use only

Isotype

IgG

Clonality

Polyclonal

Purity

Polyclonal antibodies are purified by peptide affinity chromatography

MW

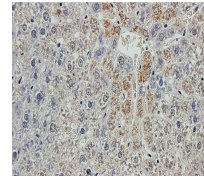
49 kDa

Uniprot ID
[Q640N2](#), [Q3SXY8](#), [M0RDU9](#)
NCBI
[001174150](#), [001167621](#)
Entrez
[200894](#)
Dilution Range

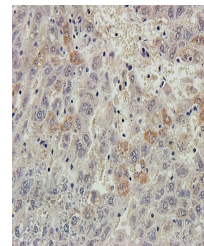
IHC-P: 1:100-500, WB: 1:100-500

Expiration Date

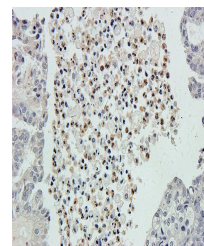
12 months from date of receipt.



IHC-P image of rat liver tissue using ARL...



IHC-P staining of rat liver tissue using...



Immunohistochemical staining of human ov...