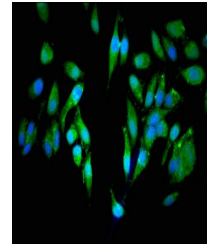


Product Datasheet

CEP250 antibody (orb418467)

Description	CEP250 antibody
Species/Host	Rabbit
Reactivity	Human
Conjugation	Unconjugated
Tested Applications	ELISA, IF
Immunogen	Recombinant Human Centrosome-associated protein CEP250 protein (40-293AA)
Target	CEP250
Preservatives	Preservative: 0.03% Proclin 300. Constituents: 50% Glycerol
Form/Appearance	Liquid
Storage	Maintain refrigerated at 2-8°C for up to 2 weeks. For long term storage store at -20°C in small aliquots to prevent freeze-thaw cycles.
Note	For research use only
Isotype	IgG
Clonality	Polyclonal
Uniprot ID	Q9BV73
Dilution Range	IF:1:50-200
Expiration Date	12 months from date of receipt.



Immunofluorescent analysis of HeLa cells...