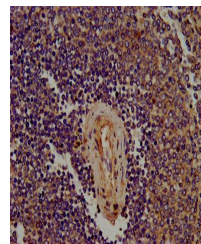


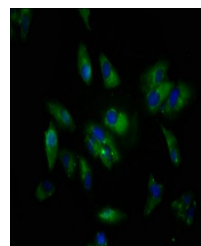
Product Datasheet

SIGLEC10 antibody (orb418327)

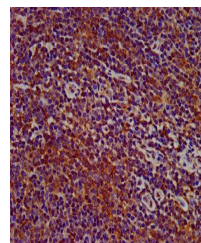
Description	SIGLEC10 antibody
Species/Host	Rabbit
Reactivity	Human
Conjugation	Unconjugated
Tested Applications	ELISA, IF, IHC
Immunogen	Recombinant Human Sialic acid-binding Ig-like lectin 10 protein (572-697AA)
Target	SIGLEC10
Preservatives	Preservative: 0.03% Proclin 300. Constituents: 50% Glycerol
Form/Appearance	Liquid
Storage	Maintain refrigerated at 2-8°C for up to 2 weeks. For long term storage store at -20°C in small aliquots to prevent freeze-thaw cycles.
Note	For research use only
Isotype	IgG
Clonality	Polyclonal
Uniprot ID	Q96LC7
Dilution Range	IHC-P:1:200-500, IF:1:50-200
Expiration Date	12 months from date of receipt.



Immunohistochemistry of paraffin-embedde...



Immunofluorescence staining of HeLa cell...



Immunohistochemistry of paraffin-embedde...