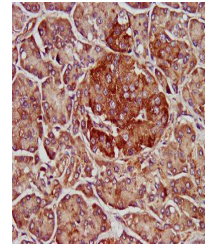


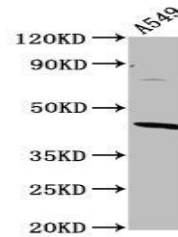
## Product Datasheet

### ELMOD3 antibody (orb418323)

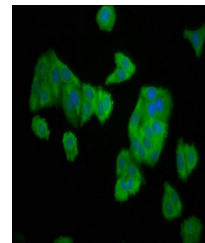
|                            |  |
|----------------------------|--|
| <b>Description</b>         | ELMOD3 antibody  |
| <b>Species/Host</b>        | Rabbit   |
| <b>Reactivity</b>          | Human  |
| <b>Conjugation</b>         | Unconjugated   |
| <b>Tested Applications</b> | ELISA, IF, IHC, WB   |
| <b>Immunogen</b>           | Recombinant Human ELMO domain-containing protein 3 protein (1-102AA) |
| <b>Target</b>              | ELMOD3   |
| <b>Preservatives</b>       | Preservative: 0.03% Proclin 300. Constituents: 50% Glycerol          |
| <b>Form/Appearance</b>     | Liquid   |
| <b>Storage</b>             | Upon receipt, store at -20°C or -80°C. Avoid repeated freeze.        |
| <b>Note</b>                | For research use only  |
| <b>Isotype</b>             | IgG  |
| <b>Clonality</b>           | Polyclonal   |
| <b>Uniprot ID</b>          | <b>Q96FG2</b>  |
| <b>Dilution Range</b>      | WB:1:500-5000, IHC-P:1:500-1000, IF:1:50-200                         |
| <b>Expiration Date</b>     | 12 months from date of receipt.                                      |



Immunohistochemistry of paraffin-embedde...



Western blot aanalysis of A549 whole cel...



Immunofluorescence staining of HepG2 cel...