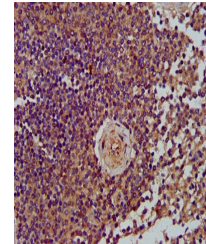


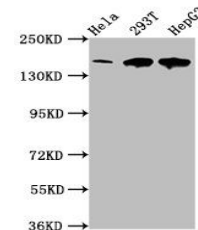
Product Datasheet

LRPPRC antibody (orb417811)

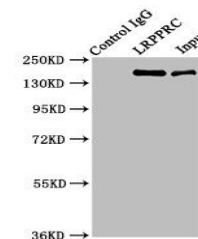
Description	LRPPRC antibody
Species/Host	Rabbit
Reactivity	Human
Conjugation	Unconjugated
Tested Applications	ELISA, IF, IHC, IP, WB
Immunogen	Recombinant Human Leucine-rich PPR motif-containing protein, mitochondrial protein (901-1036AA)
Target	LRPPRC
Preservatives	Preservative: 0.03% Proclin 300. Constituents: 50% Glycerol
Form/Appearance	Liquid
Storage	Maintain refrigerated at 2-8°C for up to 2 weeks. For long term storage store at -20°C in small aliquots to prevent freeze-thaw cycles.
Note	For research use only
Isotype	IgG
Clonality	Polyclonal
Uniprot ID	P42704
Dilution Range	WB:1:500-5000, IHC-P:1:200-500, IF:1:50-200, IP:1:200-2000
Expiration Date	12 months from date of receipt.



Immunohistochemistry of paraffin-embedde...



Western blot aanalysis of HeLa whole cel...



Immunoprecipitation analysis of HepG2 wh...