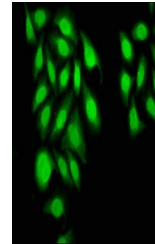


Product Datasheet

INTS6 antibody (orb416819)

Description	INTS6 antibody
Species/Host	Rabbit
Reactivity	Human
Conjugation	Unconjugated
Tested Applications	ELISA, IF
Immunogen	Recombinant Human Integrator complex subunit 6 protein (571-795AA)
Target	INTS6
Preservatives	Preservative: 0.03% Proclin 300. Constituents: 50% Glycerol
Form/Appearance	Liquid
Storage	Maintain refrigerated at 2-8°C for up to 2 weeks. For long term storage store at -20°C in small aliquots to prevent freeze-thaw cycles.
Note	For research use only
Isotype	IgG
Clonality	Polyclonal
Uniprot ID	Q9UL03
Dilution Range	IF:1:20-200
Expiration Date	12 months from date of receipt.



IF analysis of A549 cells lysates using ...