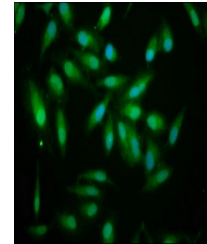


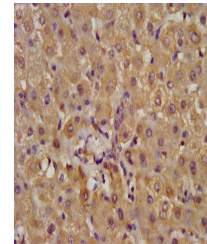
Product Datasheet

ALDH7A1 antibody (orb416687)

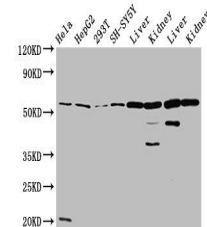
Description	ALDH7A1 antibody
Species/Host	Rabbit
Reactivity	Human, Mouse, Rat
Conjugation	Unconjugated
Tested Applications	ELISA, IF, IHC, IP, WB
Immunogen	Recombinant Human Alpha-aminoadipic semialdehyde dehydrogenase protein (386-515AA)
Target	ALDH7A1
Preservatives	Preservative: 0.03% Proclin 300. Constituents: 50% Glycerol
Form/Appearance	Liquid
Storage	Maintain refrigerated at 2-8°C for up to 2 weeks. For long term storage store at -20°C in small aliquots to prevent freeze-thaw cycles.
Note	For research use only
Isotype	IgG
Clonality	Polyclonal
Uniprot ID	P49419
Dilution Range	WB:1:500-5000, IHC-P:1:200-500, IF:1:50-200, IP:1:200-2000
Expiration Date	12 months from date of receipt.



Immunofluorescence staining of HeLa cell...



Immunohistochemistry of paraffin-embedde...



Western blot analysis of HeLa whole cel...