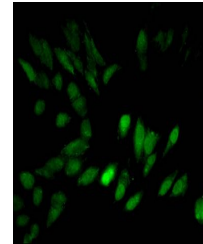


Product Datasheet

Tri-methyl-HIST1H3A (K27) antibody (orb416504)

Description	Tri-methyl-HIST1H3A (K27) antibody
Species/Host	Rabbit
Reactivity	Human
Conjugation	Unconjugated
Tested Applications	ELISA, IF
Immunogen	Peptide sequence around site of Tri-methyl-Lys (27) derived from Human Histone H3.1
Target	HIST1H3A
Preservatives	Preservative: 0.03% Proclin 300. Constituents: 50% Glycerol
Form/Appearance	Liquid
Storage	Maintain refrigerated at 2-8°C for up to 2 weeks. For long term storage store at -20°C in small aliquots to prevent freeze-thaw cycles.
Note	For research use only
Isotype	IgG
Clonality	Polyclonal
Uniprot ID	P68431
Dilution Range	IF:1:50-200
Expiration Date	12 months from date of receipt.



Immunofluorescent analysis of HeLa cells...