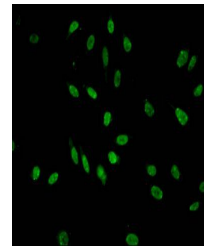


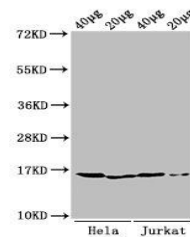
Product Datasheet

Mono-methyl-HIST1H3A (K9) antibody (orb416491)

Description	Mono-methyl-HIST1H3A (K9) antibody
Species/Host	Rabbit
Reactivity	Human
Conjugation	Unconjugated
Tested Applications	ELISA, IF, WB
Immunogen	Peptide sequence around site of Mono-methyl-Lys (9) derived from Human Histone H3.1
Target	HIST1H3A
Preservatives	Preservative: 0.03% Proclin 300. Constituents: 50% Glycerol
Form/Appearance	Liquid
Storage	Maintain refrigerated at 2-8°C for up to 2 weeks. For long term storage store at -20°C in small aliquots to prevent freeze-thaw cycles.
Note	For research use only
Isotype	IgG
Clonality	Polyclonal
Uniprot ID	P68431
Dilution Range	WB:1:500-5000, IF:1:50-200
Expiration Date	12 months from date of receipt.



Immunofluorescent analysis of HeLa cells...



Western blot analysis of HeLa cell acid...