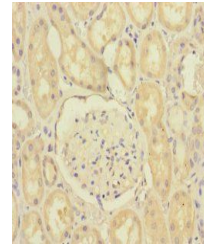


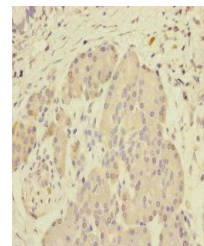
Product Datasheet

SCFD1 antibody (orb41600)

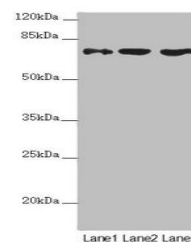
Description	SCFD1 antibody
Species/Host	Rabbit
Reactivity	Human, Mouse
Conjugation	Unconjugated
Tested Applications	ELISA, IHC, WB
Immunogen	Recombinant Human Sec1 family domain-containing protein 1 protein (373-642AA)
Target	SCFD1
Preservatives	PBS with 0.02% sodium azide, 50% glycerol, pH7.3.
Form/Appearance	Liquid
Storage	Maintain refrigerated at 2-8°C for up to 2 weeks. For long term storage store at -20°C in small aliquots to prevent freeze-thaw cycles.
Note	For research use only
Isotype	IgG
Clonality	Polyclonal
Uniprot ID	Q8WVM8
Dilution Range	WB:1:1000-5000, IHC-P:1:20-200
Expiration Date	12 months from date of receipt.



Immunohistochemical staining of human kidney tissue.



Immunohistochemical staining of human pancreas tissue.



Western blot analysis of Mouse liver tissue.