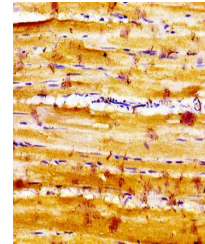


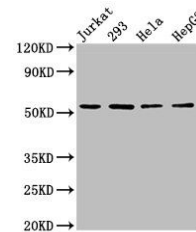
Product Datasheet

SLC16A12 antibody (orb415153)

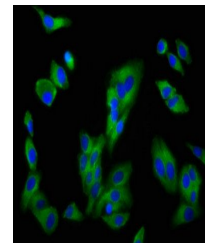
Description	SLC16A12 antibody
Species/Host	Rabbit
Reactivity	Human
Conjugation	Unconjugated
Tested Applications	ELISA, IF, IHC, WB
Immunogen	Recombinant Human Monocarboxylate transporter 12 protein (431-486AA)
Target	SLC16A12
Preservatives	Preservative: 0.03% Proclin 300. Constituents: 50% Glycerol
Form/Appearance	Liquid
Storage	Maintain refrigerated at 2-8°C for up to 2 weeks. For long term storage store at -20°C in small aliquots to prevent freeze-thaw cycles.
Note	For research use only
Isotype	IgG
Clonality	Polyclonal
Uniprot ID	Q6ZSM3
Dilution Range	WB:1:500-5000, IHC-P:1:20-200, IF:1:200-500
Expiration Date	12 months from date of receipt.



Immunohistochemistry of paraffin-embedde...



Western blot aanalysis of Jurkat whole c...



Immunofluorescence staining of HepG2 cel...