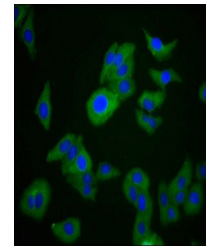


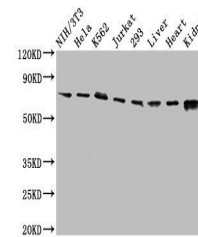
Product Datasheet

RIPK1 antibody (orb415089)

Description	RIPK1 antibody
Species/Host	Rabbit
Reactivity	Human, Mouse, Rat
Conjugation	Unconjugated
Tested Applications	ELISA, IF, WB
Immunogen	Recombinant Human Receptor-interacting serine/threonine-protein kinase 1 protein (328-458AA)
Target	RIPK1
Preservatives	Preservative: 0.03% Proclin 300. Constituents: 50% Glycerol
Form/Appearance	Liquid
Storage	Upon receipt, store at -20°C or -80°C. Avoid repeated freeze.
Note	For research use only
Isotype	IgG
Clonality	Polyclonal
Uniprot ID	Q13546
Dilution Range	WB:1:500-5000, IF:1:200-500
Expiration Date	12 months from date of receipt.



Immunofluorescence staining of HepG2 cel...



Western blot analysis of NIH/3T3 whole ...