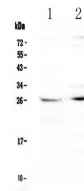


Product Datasheet

SLC31A1/CTR1 Antibody (orb413098)

Description	SLC31A1/CTR1 Antibody
Species/Host	Rabbit
Reactivity	Human, Mouse, Rat
Conjugation	Unconjugated
Tested Applications	WB
Immunogen	A synthetic peptide corresponding to a sequence of human SLC31A1/CTR1 (NGTILMETHKTVGQQMLSFPHLLQTVLHIIQ).
Form/Appearance	Lyophilized
Concentration	Adding 0.2 ml of distilled water will yield a concentration of 500 µg/ml.
Storage	Store at -20°C for one year from date of receipt. After reconstitution, at 4°C for one month. It can also be aliquotted and stored frozen at -20°C for six months. Avoid repeated freeze-thaw cycles.
Note	For research use only
Application notes	Add 0.2ml of distilled water will yield a concentration of 500ug/ml.
Isotype	Rabbit IgG
Clonality	Polyclonal
MW	26 kDa
Uniprot ID	O15431
Expiration Date	12 months from date of receipt.



WB analysis of SLC31A1/CTR1 using anti-S...