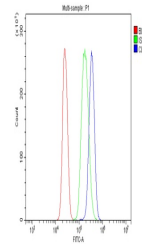


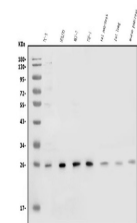
Product Datasheet

CLPP Antibody (orb413033)

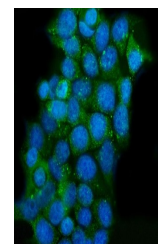
Description	CLPP Antibody
Species/Host	Rabbit
Reactivity	Human, Mouse, Rat
Conjugation	Unconjugated
Tested Applications	ELISA, FC, ICC, IF, IHC, WB
Immunogen	E. coli-derived human CLPP recombinant protein (Position: A184-H247).
Form/Appearance	Lyophilized
Concentration	Adding 0.2 ml of distilled water will yield a concentration of 500 µg/ml.
Storage	Store at -20°C for one year from date of receipt. After reconstitution, at 4°C for one month. It can also be aliquotted and stored frozen at -20°C for six months. Avoid repeated freeze-thaw cycles.
Note	For research use only
Application notes	Add 0.2ml of distilled water will yield a concentration of 500ug/ml.
Isotype	Rabbit IgG
Clonality	Polyclonal
MW	26 kDa
Uniprot ID	Q16740
Expiration Date	12 months from date of receipt.



Flow Cytometry analysis of U937 cells us...



WB analysis of CLPP using anti-CLPP anti...



IF analysis of CLPP using anti-CLPP anti...