
Product Datasheet

RNA polymerase II RPB1/POLR2A Antibody (orb413031)

Description

RNA polymerase II RPB1/POLR2A Antibody

Species/Host

Rabbit

Reactivity

Human, Mouse, Rat

Conjugation

Unconjugated

Tested

ELISA, IHC

Applications
Immunogen

E. coli-derived human POLR2A recombinant protein (Position: A1148-H1384).

Form/Appearance

Lyophilized

Concentration

Adding 0.2 ml of distilled water will yield a concentration of 500 µg/ml.

Storage

Store at -20°C for one year from date of receipt. After reconstitution, at 4°C for one month. It can also be aliquotted and stored frozen at -20°C for six months. Avoid repeated freeze-thaw cycles.

Note

For research use only

Application notes

Add 0.2ml of distilled water will yield a concentration of 500ug/ml.

Isotype

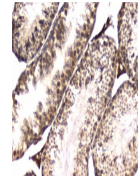
Rabbit IgG

Clonality

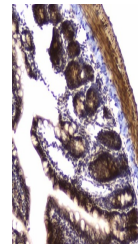
Polyclonal

Uniprot ID
P24928
Expiration Date

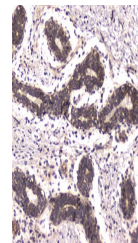
12 months from date of receipt.



IHC analysis of POLR2A using anti-POLR2A...



IHC analysis of POLR2A using anti-POLR2A...



IHC analysis of POLR2A using anti-POLR2A...