

---

## Product Datasheet

### **Mannose 6 Phosphate Receptor (Cation independent)/IGF2R Antibody (orb413019)**

**Description**

Mannose 6 Phosphate Receptor (Cation)


**Species/Host**

Rabbit

**Reactivity**

Human, Mouse, Rat

**Conjugation**

Unconjugated

**Tested Applications**

ELISA, FC, ICC, IF, IHC, WB

**Immunogen**

E. coli-derived human IGF2R recombinant protein (Position: F424-R529).

**Form/Appearance**

Lyophilized

**Concentration**

Adding 0.2 ml of distilled water will yield a concentration of 500 µg/ml.

**Storage**

Store at -20°C for one year from date of receipt. After reconstitution, at 4°C for one month. It can also be aliquotted and stored frozen at -20°C for six months. Avoid repeated freeze-thaw cycles.

**Note**

For research use only

**Application notes**

Add 0.2ml of distilled water will yield a concentration of 500ug/ml.

**Isotype**

Rabbit IgG

**Clonality**

Polyclonal

**MW**

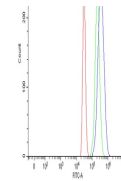
274 kDa

**Uniprot ID**
[P11717](#)
**Dilution Range**

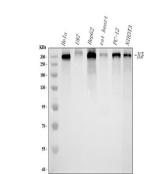
 Western blot, 0.1-0.5µg/ml Immunohistochemistry (Paraffin-embedded Section), 0.5-1µg/ml Immunocytochemistry/Immunofluorescence, 2µg/ml Flow Cytometry, 1-3µg/1x10<sup>6</sup> cells Direct ELISA, 0.1-0.5µg/ml

**Expiration Date**

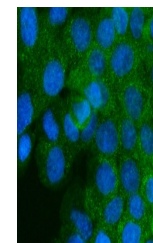
12 months from date of receipt.



Flow Cytometry analysis of HepG2 cells u...



WB analysis of IGF2R using anti-IGF2R an...



IF analysis of IGF2R using anti-IGF2R an...