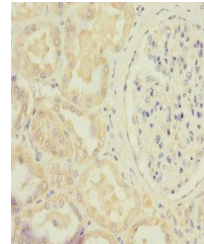


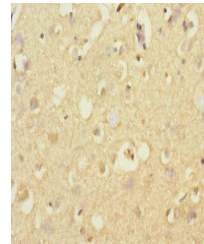
Product Datasheet

STRADA antibody (orb41278)

| | |
|----------------------------|--|
| Description | STRADA antibody |
| Species/Host | Rabbit |
| Reactivity | Human |
| Conjugation | Unconjugated |
| Tested Applications | ELISA, IHC |
| Immunogen | Recombinant Human STE20-related kinase adapter protein alpha protein (25-210AA) |
| Target | STRADA |
| Preservatives | PBS with 0.02% sodium azide, 50% glycerol, pH7.3. |
| Form/Appearance | Liquid |
| Storage | Maintain refrigerated at 2-8°C for up to 2 weeks. For long term storage store at -20°C in small aliquots to prevent freeze-thaw cycles. |
| Note | For research use only |
| Isotype | IgG |
| Clonality | Polyclonal |
| Uniprot ID | Q7RTN6 |
| Dilution Range | IHC-P:1:20-200 |
| Expiration Date | 12 months from date of receipt. |



Immunohistochemistry of paraffin-embedde...



Immunohistochemistry of paraffin-embedde...