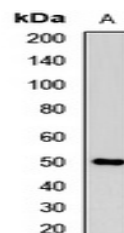


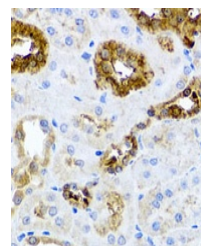
Product Datasheet

SHH antibody (orb412652)

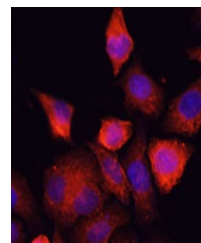
Description	Rabbit polyclonal antibody to SHH
Species/Host	Rabbit
Reactivity	Human, Rat
Conjugation	Unconjugated
Tested Applications	IF, IH, WB
Immunogen	KLH-conjugated synthetic peptide of human SHH
Target	SHH
Preservatives	Liquid in 0.42% Potassium phosphate, 0.87% Sodium chloride, pH 7.3, 30% glycerol, and 0.01% sodium azide.
Form/Appearance	Liquid in 0.42% Potassium phosphate, 0.87% Sodium chloride, pH 7.3, 30% glycerol, and 0.01% sodium azide.
Storage	Shipped at 4°C. Upon delivery aliquot and store at -20°C for one year. Avoid freeze/thaw cycles.
Note	For research use only
Clonality	Polyclonal
Source	Rabbit
Uniprot ID	Q15465 , Q63673 , Q62226
Entrez	29499 , 20423 , 6469
Dilution Range	WB: 1:500-2000
Expiration Date	12 months from date of receipt.



Western blot analysis of SHH expression ...



Immunohistochemical analysis of SHH stai...



Immunofluorescent analysis of SHH staini...