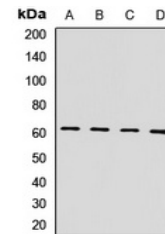


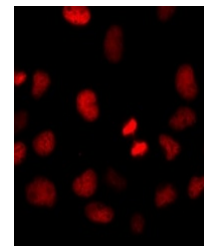
Product Datasheet

HIRIP3 antibody (orb412526)

Description	Rabbit polyclonal antibody to HIRIP3
Species/Host	Rabbit
Reactivity	Human, Mouse, Rat
Conjugation	Unconjugated
Tested Applications	IF, IH, WB
Immunogen	Recombinant full length protein of human HIRIP3
Target	HIRIP3
Preservatives	Liquid in 0.42% Potassium phosphate, 0.87% Sodium chloride, pH 7.3, 30% glycerol, and 0.01% sodium azide.
Form/Appearance	Liquid in 0.42% Potassium phosphate, 0.87% Sodium chloride, pH 7.3, 30% glycerol, and 0.01% sodium azide.
Storage	Shipped at 4°C. Upon delivery aliquot and store at -20°C for one year. Avoid freeze/thaw cycles.
Note	For research use only
Clonality	Polyclonal
Source	Rabbit
Uniprot ID	Q9BW71 , Q8BLH7
Entrez	8479 , 233876
Dilution Range	WB: 1:500-2000, IHC-P: 1:50-200, IF/ICC: 1:50-200
Expiration Date	12 months from date of receipt.



Western blot analysis of HIRIP3 expression...



Immunofluorescent analysis of HIRIP3 staining...