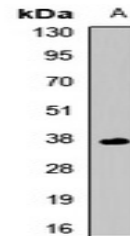


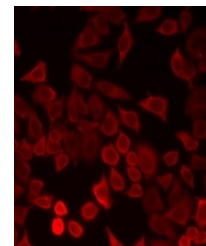
Product Datasheet

LECT1 antibody (orb412474)

Description	Rabbit polyclonal antibody to LECT1
Species/Host	Rabbit
Reactivity	Human, Mouse
Conjugation	Unconjugated
Tested Applications	IF, WB
Immunogen	Recombinant full length protein of human LECT1
Target	LECT1
Preservatives	Liquid in 0.42% Potassium phosphate, 0.87% Sodium chloride, pH 7.3, 30% glycerol, and 0.01% sodium azide.
Form/Appearance	Liquid in 0.42% Potassium phosphate, 0.87% Sodium chloride, pH 7.3, 30% glycerol, and 0.01% sodium azide.
Storage	Maintain refrigerated at 2-8°C for up to 2 weeks. For long term storage store at -20°C in small aliquots to prevent freeze-thaw cycles.
Note	For research use only
Clonality	Polyclonal
Source	Rabbit
Uniprot ID	Q9Z1F6 , O75829
Entrez	16840 , 11061
Dilution Range	WB: 1:500-2000, IF/ICC: 1:50-200
Expiration Date	12 months from date of receipt.



Western blot analysis of LECT1 expression...



Immunofluorescent analysis of LECT1 staining...