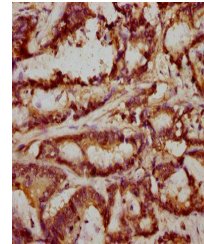


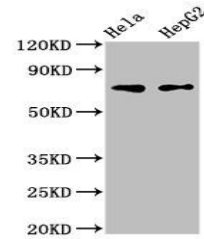
Product Datasheet

FRMD6 antibody (orb41219)

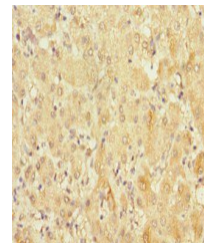
Description	FRMD6 antibody
Species/Host	Rabbit
Reactivity	Human
Conjugation	Unconjugated
Tested Applications	ELISA, IHC, WB
Immunogen	Recombinant Human FERM domain-containing protein 6 protein (413-622AA)
Target	FRMD6
Preservatives	PBS with 0.02% sodium azide, 50% glycerol, pH7.3.
Form/Appearance	Liquid
Storage	Maintain refrigerated at 2-8°C for up to 2 weeks. For long term storage store at -20°C in small aliquots to prevent freeze-thaw cycles.
Note	For research use only
Isotype	IgG
Clonality	Polyclonal
Uniprot ID	Q96NE9
Dilution Range	WB:1:500-5000, IHC-P:1:20-500
Expiration Date	12 months from date of receipt.



Immunohistochemistry of paraffin-embedde...



Western blot analysis of HeLa whole cel...



Immunohistochemistry of paraffin-embedde...