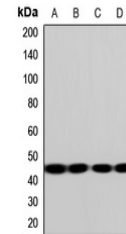


Product Datasheet

SLC7A5 antibody (orb412136)

Description	Rabbit polyclonal antibody to SLC7A5
Species/Host	Rabbit
Reactivity	Human, Mouse, Rat
Conjugation	Unconjugated
Tested Applications	WB
Immunogen	Recombinant full length protein of human LAT1
Target	SLC7A5
Preservatives	Liquid in 0.42% Potassium phosphate, 0.87% Sodium chloride, pH 7.3, 30% glycerol, and 0.01% sodium azide.
Form/Appearance	Liquid in 0.42% Potassium phosphate, 0.87% Sodium chloride, pH 7.3, 30% glycerol, and 0.01% sodium azide.
Storage	Maintain refrigerated at 2-8°C for up to 2 weeks. For long term storage store at -20°C in small aliquots to prevent freeze-thaw cycles.
Note	For research use only
Clonality	Polyclonal
Source	Rabbit
Uniprot ID	Q01650 , Q63016 , Q9Z127
Entrez	20539 , 8140 , 50719
Dilution Range	WB: 1:500-2000
Expiration Date	12 months from date of receipt.



Western blot analysis of LAT1 expression...