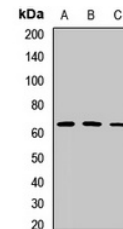


Product Datasheet

MTA3 antibody (orb412087)

Description	Rabbit polyclonal antibody to MTA3
Species/Host	Rabbit
Reactivity	Human, Mouse
Conjugation	Unconjugated
Tested Applications	WB
Immunogen	Recombinant full length protein of human MTA3
Target	MTA3
Preservatives	Liquid in 0.42% Potassium phosphate, 0.87% Sodium chloride, pH 7.3, 30% glycerol, and 0.01% sodium azide.
Form/Appearance	Liquid in 0.42% Potassium phosphate, 0.87% Sodium chloride, pH 7.3, 30% glycerol, and 0.01% sodium azide.
Storage	Maintain refrigerated at 2-8°C for up to 2 weeks. For long term storage store at -20°C in small aliquots to prevent freeze-thaw cycles.
Note	For research use only
Clonality	Polyclonal
Source	Rabbit
Uniprot ID	Q924K8 , Q9BTC8
Entrez	116871 , 57504
Dilution Range	WB: 1:500-2000, IP: 1:50-100
Expiration Date	12 months from date of receipt.



Western blot analysis of MTA3 expression...