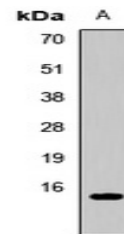


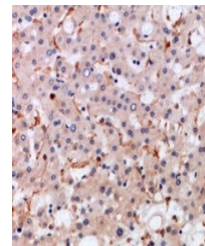
Product Datasheet

CCL21 antibody (orb412041)

Description	Rabbit polyclonal antibody to CCL21
Species/Host	Rabbit
Reactivity	Human
Conjugation	Unconjugated
Tested Applications	IH, WB
Immunogen	Recombinant full length protein of human CCL21
Target	CCL21
Preservatives	Liquid in 0.42% Potassium phosphate, 0.87% Sodium chloride, pH 7.3, 30% glycerol, and 0.01% sodium azide.
Form/Appearance	Liquid in 0.42% Potassium phosphate, 0.87% Sodium chloride, pH 7.3, 30% glycerol, and 0.01% sodium azide.
Storage	Maintain refrigerated at 2-8°C for up to 2 weeks. For long term storage store at -20°C in small aliquots to prevent freeze-thaw cycles.
Note	For research use only
Clonality	Polyclonal
Source	Rabbit
Uniprot ID	O00585
Entrez	6366
Dilution Range	WB: 1:500-2000, IHC-P: 1:50-200
Expiration Date	12 months from date of receipt.



Western blot analysis of CCL21 expressio...



Immunohistochemical analysis of CCL21 st...