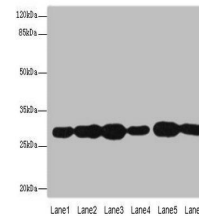


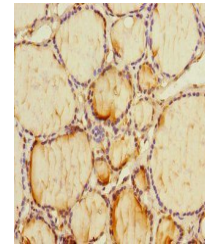
Product Datasheet

PMM2 antibody (orb41204)

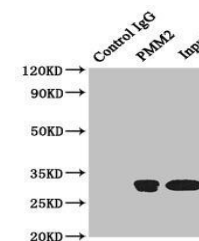
Description	PMM2 antibody
Species/Host	Rabbit
Reactivity	Human
Conjugation	Unconjugated
Tested Applications	ELISA, IHC, IP, WB
Immunogen	Recombinant Human Phosphomannomutase 2 protein (1-246AA)
Target	PMM2
Preservatives	PBS with 0.02% sodium azide, 50% glycerol, pH7.3.
Form/Appearance	Liquid
Storage	Maintain refrigerated at 2-8°C for up to 2 weeks. For long term storage store at -20°C in small aliquots to prevent freeze-thaw cycles.
Note	For research use only
Isotype	IgG
Clonality	Polyclonal
Uniprot ID	O15305
Dilution Range	WB:1:1000-5000, IHC-P:1:20-200, IP:1:200-2000
Expiration Date	12 months from date of receipt.



Western blot analysis of A549(lane 1), H...



Immunohistochemical staining of human th...



Immunoprecipitation analysis of HeLa who...