

Product Datasheet

Anti-Integrin alpha 4 [Natalizumab] (orb411591)

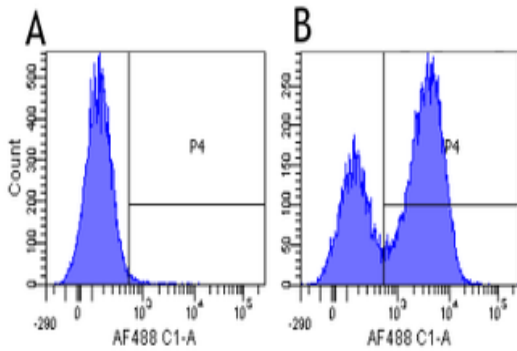
Description	Human monoclonal antibody to Integrin alpha 4
Species/Host	Human
Reactivity	Human
Conjugation	Unconjugated
Tested Applications	Blocking, FC
Immunogen	The RAMOS cell line, a non-EBV releasing cell line, injected into mice.
Target	Integrin alpha 4
Preservatives	PBS with 0.02% Proclin 300.
Concentration	1 mg/ml
Storage	Maintain refrigerated at 2-8°C for up to 2 weeks. For long term storage store at -20°C in small aliquots to prevent freeze-thaw cycles.
Note	For research use only
Isotype	IgG4
Clonality	Monoclonal
Clone Number	Natalizumab
Purity	Purified
Uniprot ID	P13612
Expiration Date	12 months from date of receipt.

Biorbyt Ltd.

7 Signet Court, Swann's Road,
Cambridge, CB5 8LA, United Kingdom
Email: info@biorbyt.com, support@biorbyt.com
Phone: [+44 \(0\) 1223 859-353](tel:+44(0)1223859353) | Fax: [+1 \(415\) 651-8558](tel:+1(415)6518558)

Biorbyt LLC.

68 TW Alexander Drive,
Durham, NC, 27713, United States
Email: info@biorbyt.com, support@biorbyt.com
Phone: [+1 \(415\) 906-5211](tel:+1(415)9065211) | Fax: [+1 \(415\) 651-8558](tel:+1(415)6518558)



Flow-cytometry using the anti-Integrin alpha 4 research biosimilar antibody Natalizumab Human lymphocytes were stained with an isotype control (orb256390, panel A) or the rabbit-chimeric version of Natalizumab (orb411592, panel B) at a concentration of 1 µg/ml for 30 mins at RT. After washing, bound antibody was detected using a AF488 conjugated donkey anti-rabbit antibody and cells analysed on a FACSCanto flow-cytometer.

Biorbyt Ltd.

7 Signet Court, Swann's Road,
Cambridge, CB5 8LA, United Kingdom

Email: info@biorbyt.com, support@biorbyt.com

Phone: [+44 \(0\) 1223 859-353](tel:+44(0)1223859353) | Fax: [+1 \(415\) 651-8558](tel:+1(415)6518558)

Biorbyt LLC.

68 TW Alexander Drive,
Durham, NC, 27713, United States

Email: info@biorbyt.com, support@biorbyt.com

Phone: [+1 \(415\) 906-5211](tel:+1(415)9065211) | Fax: [+1 \(415\) 651-8558](tel:+1(415)6518558)