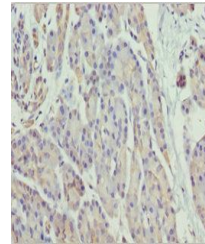


Product Datasheet

CCL13 antibody (orb40887)

Description	CCL13 antibody
Species/Host	Rabbit
Reactivity	Human
Conjugation	Unconjugated
Tested Applications	ELISA, IHC
Immunogen	Recombinant Human N-terminal kinase-like protein (460-740AA)
Target	SCYL1
Preservatives	PBS with 0.02% sodium azide, 50% glycerol, pH7.3.
Form/Appearance	Liquid
Storage	Maintain refrigerated at 2-8°C for up to 2 weeks. For long term storage store at -20°C in small aliquots to prevent freeze-thaw cycles.
Note	For research use only
Isotype	IgG
Clonality	Polyclonal
Uniprot ID	Q96KG9
Dilution Range	IHC-P:1:20-200
Expiration Date	12 months from date of receipt.



Immunohistochemistry of paraffin-embedde...