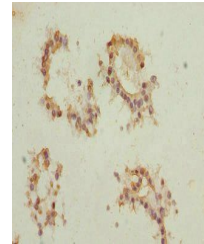


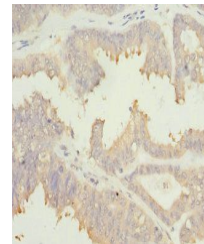
Product Datasheet

EIF2B1 antibody (orb40803)

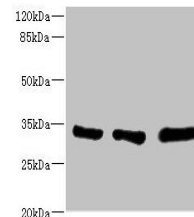
| | |
|----------------------------|-----------------------------------------------------------------------------------------------------------------------------------------|
| Description | EIF2B1 antibody |
| Species/Host | Rabbit |
| Reactivity | Human, Mouse |
| Conjugation | Unconjugated |
| Tested Applications | ELISA, IHC, WB |
| Immunogen | Recombinant Human Translation initiation factor eIF-2B subunit alpha protein (1-305AA) |
| Target | EIF2B1 |
| Preservatives | PBS with 0.02% sodium azide, 50% glycerol, pH7.3. |
| Form/Appearance | Liquid |
| Storage | Maintain refrigerated at 2-8°C for up to 2 weeks. For long term storage store at -20°C in small aliquots to prevent freeze-thaw cycles. |
| Note | For research use only |
| Isotype | IgG |
| Clonality | Polyclonal |
| Uniprot ID | Q14232 |
| Dilution Range | WB:1:1000-5000, IHC-P:1:20-200 |
| Expiration Date | 12 months from date of receipt. |



Immunohistochemical staining of human brain tissue.



Immunohistochemical staining of human placenta tissue.



Western blot analysis of K562 whole cell lysate.