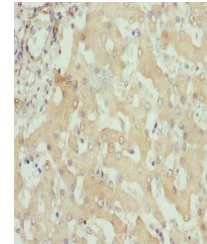


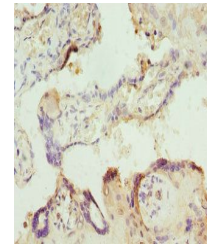
Product Datasheet

ITPK1 antibody (orb40746)

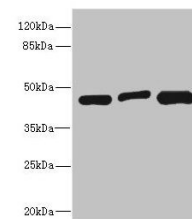
| | |
|----------------------------|-----------------------------------------------------------------------------------------------------------------------------------------|
| Description | ITPK1 antibody |
| Species/Host | Rabbit |
| Reactivity | Human |
| Conjugation | Unconjugated |
| Tested Applications | ELISA, IHC, WB |
| Immunogen | Recombinant Human Inositol-tetrakisphosphate 1-kinase protein (185-414AA) |
| Target | ITPK1 |
| Preservatives | PBS with 0.02% sodium azide, 50% glycerol, pH7.3. |
| Form/Appearance | Liquid |
| Storage | Maintain refrigerated at 2-8°C for up to 2 weeks. For long term storage store at -20°C in small aliquots to prevent freeze-thaw cycles. |
| Note | For research use only |
| Isotype | IgG |
| Clonality | Polyclonal |
| Uniprot ID | Q13572 |
| Dilution Range | WB:1:1000-5000, IHC-P:1:20-200 |
| Expiration Date | 12 months from date of receipt. |



Immunohistochemical staining of human li...



Immunohistochemical staining of human pl...



Western blot analysis of Hela whole cell...