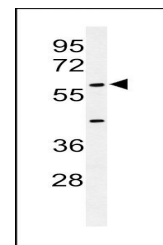
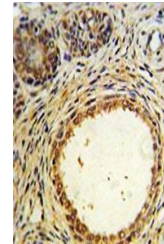


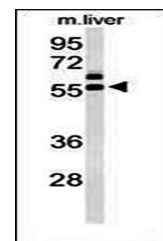
Product Datasheet

AMH antibody (orb40644)

Description	Rabbit polyclonal antibody to AMH which is also known as MIS whose expression can be detected in the...
Species/Host	Rabbit
Reactivity	Human, Mouse
Conjugation	Unconjugated
Tested Applications	FC, IHC-P, WB
Immunogen	Synthetic Peptide
Target	AMH
Form/Appearance	Purified polyclonal antibody supplied in PBS with 0.09% (W/V) sodium azide. This antibody is purified through a protein A column, followed by peptide affinity purification.
Storage	Maintain refrigerated at 2-8°C for up to 2 weeks. For long term storage store at -20°C in small aliquots to prevent freeze-thaw cycles
Note	For research use only
Isotype	Rabbit IgG
Clonality	Polyclonal
MW	59195
Uniprot ID	P03971
NCBI	NP_000470.2
Dilution Range	WB: 1:2000, IHC-P: 1:25, FACS: 1:25
Expiration Date	12 months from date of receipt.



WB analysis of using AMH antibody



Western blot analysis of AMH antibody in...