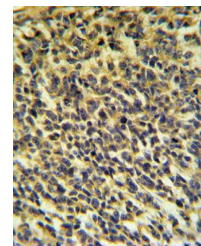
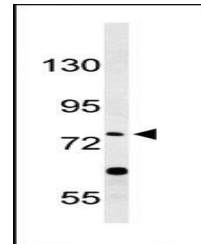


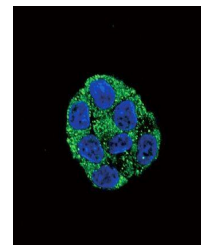
Product Datasheet

PLA2G6 antibody (orb40642)

Description	Purified rabbit polyclonal antibody.
Species/Host	Rabbit
Reactivity	Human
Conjugation	Unconjugated
Tested Applications	FC, IF, IHC-P, WB
Immunogen	Synthetic Peptide
Target	PLA2G6
Form/Appearance	Purified polyclonal antibody supplied in PBS with 0.09% (W/V) sodium azide. This antibody is prepared by Saturated Ammonium Sulfate (SAS) precipitation followed by dialysis against PBS.
Storage	Maintain refrigerated at 2-8°C for up to 2 weeks. For long term storage store at -20°C in small aliquots to prevent freeze-thaw cycles
Note	For research use only
Isotype	Rabbit IgG
Clonality	Polyclonal
MW	89903
Uniprot ID	O60733
NCBI	NP_001004426.1 , NP_003551.2 , NP_001186491.1
Dilution Range	WB: 1:1000, IHC-P: 1:10-50, IF/ICC: 1:10-50, FACS: 1:10-50
Expiration Date	12 months from date of receipt.



Immunohistochemical analysis of formalin...



Confocal immunofluorescence analysis of ...