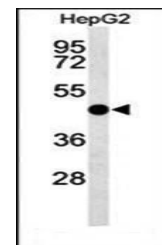
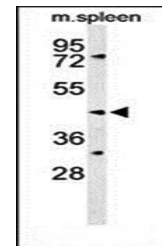


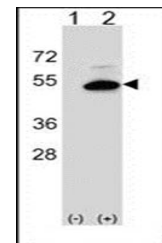
Product Datasheet

SMS2 antibody (orb40443)

Description	Rabbit polyclonal antibody to SMS2
Species/Host	Rabbit
Reactivity	Human, Mouse
Conjugation	Unconjugated
Tested Applications	WB
Immunogen	Synthetic Peptide
Target	SGMS2
Form/Appearance	Purified polyclonal antibody supplied in PBS with 0.09% (W/V) sodium azide. This antibody is purified through a protein A column, followed by peptide affinity purification.
Storage	Maintain refrigerated at 2-8°C for up to 2 weeks. For long term storage store at -20°C in small aliquots to prevent freeze-thaw cycles
Note	For research use only
Isotype	Rabbit IgG
Clonality	Polyclonal
MW	42280
Uniprot ID	Q8NHU3
NCBI	NP_001129729.1 , NP_001129730.1 , NP_689834.1
Dilution Range	WB: 1:1000
Expiration Date	12 months from date of receipt.



Western blot analysis of HepG2 cell line...



Western blot analysis of 293 cell lysate...