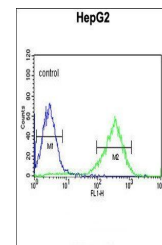
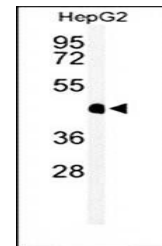


Product Datasheet

HFE2 antibody (orb40399)

Description	Rabbit polyclonal antibody to HFE2 also known as Hemojuvelin, is a membrane-bound and soluble protei...
Species/Host	Rabbit
Reactivity	Human
Conjugation	Unconjugated
Tested Applications	FC, WB
Immunogen	Synthetic Peptide
Target	HJV
Form/Appearance	Purified polyclonal antibody supplied in PBS with 0.09% (W/V) sodium azide. This antibody is purified through a protein A column, followed by peptide affinity purification.
Storage	Maintain refrigerated at 2-8°C for up to 2 weeks. For long term storage store at -20°C in small aliquots to prevent freeze-thaw cycles
Note	For research use only
Isotype	Rabbit IgG
Clonality	Polyclonal
MW	45080
Uniprot ID	Q6ZVN8
NCBI	NP_998817.1 , NP_998818.1 , NP_973733.1 , NP_660320.3
Dilution Range	WB: 1:1000, FACS: 1:10-50
Expiration Date	12 months from date of receipt.



Flow cytometric analysis of HepG2 cells

...