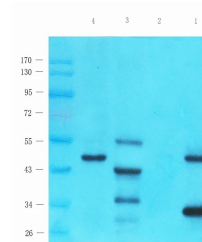


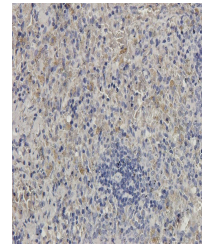
Product Datasheet

P2Y2 antibody (orb402972)

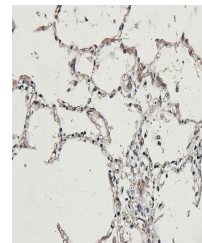
Description	P2Y2 antibody
Species/Host	Rabbit
Reactivity	Human, Mouse, Porcine, Rat
Conjugation	Unconjugated
Tested Applications	ICC, IF, IHC-P, WB
Immunogen	KLH conjugated synthetic peptide derived from human ATRX. Please contact us for the exact immunogen sequence.
Target	P2Y2
Form/Appearance	10 mM PBS, 0.02% sodium azide
Concentration	- 100 µg (in 200 µl): 0.5 mg/ml- 200 µg (in 400 µl): 0.5 mg/ml
Storage	Store at 4°C for up to two weeks. For long term storage, aliquot and store at -20°C, avoid freeze/thaw cycles.
Note	For research use only
Isotype	IgG
Clonality	Polyclonal
Purity	Polyclonal antibodies are purified by peptide affinity chromatography
MW	42 kDa
Uniprot ID	P41231
Dilution Range	IF/ICC: 1:50-300, IHC-P: 1:50-300, WB: 1:200-1000
Expiration Date	12 months from date of receipt.



WB analysis of mouse spleen (lane 1), mo...



Immunohistochemical staining of rat sple...



Immunohistochemical staining of paraffin...