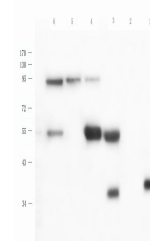


Product Datasheet

ROR Gamma T antibody (orb402969)

Description	ROR Gamma T antibody
Species/Host	Rabbit
Reactivity	Guinea pig, Human, Mouse, Rat
Conjugation	Unconjugated
Tested Applications	WB
Immunogen	KLH conjugated synthetic peptide derived from human ATRX. Please contact us for the exact immunogen sequence.
Target	ROR Gamma T
Form/Appearance	10 mM PBS, 0.02% sodium azide
Concentration	- 100 µg (in 200 µl): 0.5 mg/ml- 200 µg (in 400 µl): 0.5 mg/ml
Storage	Store at 4°C for up to two weeks. For long term storage, aliquot and store at -20°C, avoid freeze/thaw cycles.
Note	For research use only
Isotype	IgG
Clonality	Polyclonal
Purity	Polyclonal antibodies are purified by peptide affinity chromatography
MW	58 kDa
Uniprot ID	P51450
Dilution Range	WB: 1:200-1500
Expiration Date	12 months from date of receipt.



Western blot analysis of rat liver (lane...)