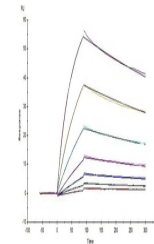


## Product Datasheet

### Human M-CSF / CSF-1 Protein (orb402822)

<b>Description</b>	Human M-CSF, His Tag is expressed from human 293 cells (HEK293). It contains AA Glu 33 - Arg 255 (Ac...
<b>Reactivity</b>	Human
<b>Endotoxins</b>	1.0 EU per µg
<b>Conjugation</b>	Unconjugated
<b>Target</b>	M-CSF
<b>Preservatives</b>	PBS, pH7.4
<b>Form/Appearance</b>	Powder
<b>Storage</b>	-20°C to -70°C for 12 months in lyophilized state; -70°C for 3 months under sterile conditions after reconstitution. For long term storage, the product should be stored at lyophilized state at -20°C or lower.
<b>Tag</b>	N-6×His
<b>Note</b>	For research use only
<b>Application notes</b>	This protein carries a polyhistidine tag at the N-terminus. The protein has a calculated MW of 26.0 kDa. The protein migrates as 36-45 kDa under reducing (R) condition (SDS-PAGE) due to glycosylation.
<b>Purity</b>	95%
<b>Source</b>	Human M-CSF, His Tag (orb402822) is expressed from human 293 cells (HEK293). It contains AA Glu 33 - Arg 255 (Accession # P09603-1).
<b>MW</b>	26.0 kDa
<b>Uniprot ID</b>	<b>P09603</b>
<b>NCBI</b>	<b>AAH21117.1</b>
<b>Expiration Date</b>	6 months from date of receipt.



Human M-CSF, His Tag  
(Cat. No. orb402822...)