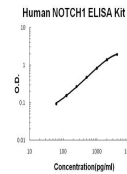


Product Datasheet

Human NOTCH1 / TAN 1 ELISA Kit (orb402732)

Description	Human NOTCH1 / TAN 1 ELISA Kit
Reactivity	Human
Range	62.5 pg/ml - 4,000 pg/ml
Tested Applications	ELISA
Immunogen	Expression system for standard: NS0; Immunogen sequence: A19-Q526
Storage	Store at 4°C for 6 months, at -20°C for 12 months. Avoid multiple freeze-thaw cycles (Ships with gel ice, can store for up to 3 days in room temperature. Freeze upon receiving.)
Note	For research use only
Application notes	Dilution ratio of 1:1, concentration in serum and plasma is around 1600 pg/ml
Sample Types	cell culture supernatants, serum and plasma (heparin, EDTA).
Uniprot ID	P46531
Sensitivity	12 pg/ml
Expiration Date	Please enquire.



Human NOTCH1 ELISA Kit standard curve