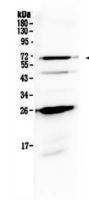


Product Datasheet

SLC7A3 Antibody (orb402586)

Description	SLC7A3 Antibody
Species/Host	Rabbit
Reactivity	Human
Conjugation	Unconjugated
Tested Applications	WB
Immunogen	A synthetic peptide corresponding to a sequence at the N-terminus of human SLC7A3 (1-30aa MPWQAFRRFGQKLVRRRTLESGMAETRLAR), different from the related mouse and rat sequences by four amino acids.
Form/Appearance	Lyophilized
Concentration	Adding 0.2 ml of distilled water will yield a concentration of 500 µg/ml.
Storage	Store at -20°C for one year from date of receipt. After reconstitution, at 4°C for one month. It can also be aliquotted and stored frozen at -20°C for six months. Avoid repeated freeze-thaw cycles.
Note	For research use only
Application notes	Tested Species: In-house tested species with positive results. Other applications have not been tested. Optimal dilutions should be determined by end users. . Add 0.2ml of distilled water will yield a concentration of 500ug/ml.
Isotype	Rabbit IgG
Clonality	Polyclonal
MW	67169 MW
Uniprot ID	Q8WY07
Expiration Date	12 months from date of receipt.



WB analysis of SLC7A3 using anti-SLC7A3 ...