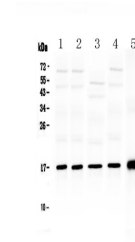


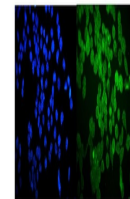
Product Datasheet

Hsp20/HSPB6 Antibody (orb402576)

Description	Hsp20/HSPB6 Antibody
Species/Host	Rabbit
Reactivity	Human, Mouse, Rat
Conjugation	Unconjugated
Tested Applications	ICC, IF, IHC, WB
Immunogen	E. coli-derived human Hsp20 recombinant protein (Position: H73-L123). Human Hsp20 shares 88.2% and 92.2% amino acid (aa) sequence identity with mouse and rat Hsp20, respectively.
Form/Appearance	Lyophilized
Concentration	Adding 0.2 ml of distilled water will yield a concentration of 500 µg/ml.
Storage	Store at -20°C for one year from date of receipt. After reconstitution, at 4°C for one month. It can also be aliquotted and stored frozen at -20°C for six months. Avoid repeated freeze-thaw cycles.
Note	For research use only
Application notes	Tested Species: In-house tested species with positive results. Other applications have not been tested. Optimal dilutions should be determined by end users. . Add 0.2ml of distilled water will yield a concentration of 500ug/ml.
Isotype	Rabbit IgG
Clonality	Polyclonal
MW	17136 MW
Uniprot ID	014558
Expiration Date	12 months from date of receipt.



WB analysis of Hsp20 using anti-Hsp20 an...



IF analysis of Hsp20 using anti-Hsp20 an...



IHC analysis of Hsp20 using anti-Hsp20 a...