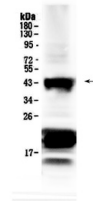


## Product Datasheet

### CHX10/VSX2 Antibody (orb402561)

<b>Description</b>	CHX10/VSX2 Antibody
<b>Species/Host</b>	Rabbit
<b>Reactivity</b>	Human, Mouse
<b>Conjugation</b>	Unconjugated
<b>Tested Applications</b>	WB
<b>Immunogen</b>	E. coli-derived human CHX10 recombinant protein (Position: A249-A361). Human CHX10 shares 90.3% amino acid (aa) sequence identity with mouse CHX10.
<b>Form/Appearance</b>	Lyophilized
<b>Concentration</b>	Adding 0.2 ml of distilled water will yield a concentration of 500 µg/ml.
<b>Storage</b>	Store at -20°C for one year from date of receipt. After reconstitution, at 4°C for one month. It can also be aliquotted and stored frozen at -20°C for six months. Avoid repeated freeze-thaw cycles.
<b>Note</b>	For research use only
<b>Application notes</b>	Tested Species: In-house tested species with positive results. Predicted Species: Species predicted to be fit for the product based on sequence similarities. Other applications have not been tested. Optimal dilutions should be determined by end users. . Add 0.2ml of distilled water will yield a concentration of 500ug/ml.
<b>Isotype</b>	Rabbit IgG
<b>Clonality</b>	Polyclonal
<b>MW</b>	39411 MW
<b>Uniprot ID</b>	<b>P58304</b>
<b>Expiration Date</b>	12 months from date of receipt.



WB analysis of CHX10 using anti-CHX10 an...