
Product Datasheet

Laminin/Lamc1/Lamc2/Lamc3 Antibody (orb402531)

Description

Laminin/Lamc1/Lamc2/Lamc3 Antibody

Species/Host

Rabbit

Reactivity

Human, Mouse, Rat

Conjugation

Unconjugated

Tested Applications

IF, IHC, WB

Immunogen

Peptide mixture of laminin gamma1,2,3 (NKLNEIEGSLNKAKDEMKAS; DLEERVRRQRNHLHLETSI; LQLDSHGALHHKLRQLEEES). Laminin gamma has only three subtypes of antibody to gamma1-3 reactive with all isoforms of laminin.

Form/Appearance

Lyophilized

Concentration

Adding 0.2 ml of distilled water will yield a concentration of 500 µg/ml.

Storage

Store at -20°C for one year from date of receipt. After reconstitution, at 4°C for one month. It can also be aliquotted and stored frozen at -20°C for six months. Avoid repeated freeze-thaw cycles.

Note

For research use only

Application notes

Tested Species: In-house tested species with positive results. By Heat: Boiling the paraffin sections in 10mM citrate buffer, pH6.0, for 20mins is required for the staining of formalin/paraffin sections. Other applications have not been tested. Optimal dilutions should be determined by end users. . Add 0.2ml of distilled water will yield a concentration of 500ug/ml.

Isotype

Rabbit IgG

Clonality

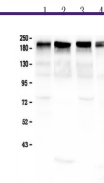
Polyclonal

MW

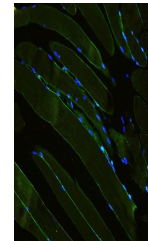
177298 MW

Uniprot ID
P02468
Expiration Date

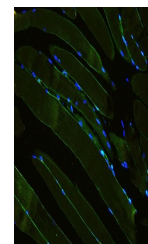
12 months from date of receipt.



WB analysis of Laminin using anti-Lamini...



IF analysis of Laminin using anti-Lamini...



IF analysis of Laminin using anti-Lamini...