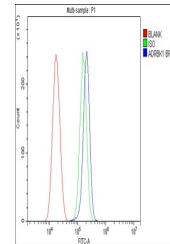


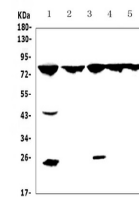
## Product Datasheet

### GRK2/GRK2 Antibody (orb402466)

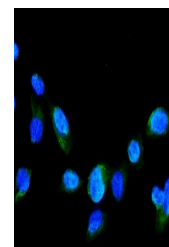
|                            |  |
|----------------------------|--|
| <b>Description</b>         | GRK2/GRK2 Antibody   |
| <b>Species/Host</b>        | Rabbit   |
| <b>Reactivity</b>          | Human, Mouse, Rat  |
| <b>Conjugation</b>         | Unconjugated   |
| <b>Tested Applications</b> | FC, ICC, IF, IHC, WB   |
| <b>Immunogen</b>           | A synthetic peptide corresponding to a sequence of human GRK2 (DSDPELVQWKELRDYREAQQLVQRPVKMKNK).   |
| <b>Form/Appearance</b>     | Lyophilized  |
| <b>Concentration</b>       | Adding 0.2 ml of distilled water will yield a concentration of 500 µg/ml.  |
| <b>Storage</b>             | Store at -20°C for one year from date of receipt. After reconstitution, at 4°C for one month. It can also be aliquotted and stored frozen at -20°C for six months. Avoid repeated freeze-thaw cycles.  |
| <b>Note</b>                | For research use only  |
| <b>Application notes</b>   | Tested Species: In-house tested species with positive results.<br>By Heat: Boiling the paraffin sections in 10mM citrate buffer, pH6.0, for 20mins is required for the staining of formalin/paraffin sections. Other applications have not been tested. Optimal dilutions should be determined by end users. .<br>Add 0.2ml of distilled water will yield a concentration of 500ug/ml. |
| <b>Isotype</b>             | Rabbit IgG   |
| <b>Clonality</b>           | Polyclonal   |
| <b>MW</b>                  | 79 kDa   |
| <b>Uniprot ID</b>          | <b>P25098</b>  |
| <b>Expiration Date</b>     | 12 months from date of receipt.  |



Flow Cytometry analysis of U87 cells usi...



WB analysis of GRK2 using anti-GRK2 anti...



IF analysis of GRK2 using anti-GRK2 anti...