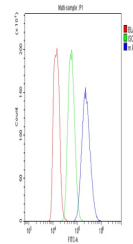


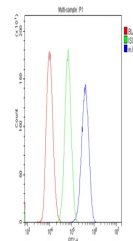
Product Datasheet

VEGF Receptor 2/Kdr Antibody (orb402417)

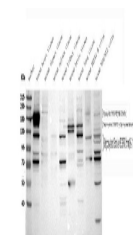
Description	VEGF Receptor 2/Kdr Antibody
Species/Host	Rabbit
Reactivity	Mouse, Rat
Conjugation	Unconjugated
Tested Applications	FC, ICC, IF, IHC, WB
Immunogen	E. coli-derived mouse VEGF Receptor 2 recombinant protein (Position: A20-L244).
Form/Appearance	Lyophilized
Concentration	Adding 0.2 ml of distilled water will yield a concentration of 500 µg/ml.
Storage	Store at -20°C for one year from date of receipt. After reconstitution, at 4°C for one month. It can also be aliquotted and stored frozen at -20°C for six months. Avoid repeated freeze-thaw cycles.
Note	For research use only
Application notes	Add 0.2ml of distilled water will yield a concentration of 500ug/ml.
Isotype	Rabbit IgG
Clonality	Polyclonal
MW	150 kDa
Uniprot ID	P35918
Expiration Date	12 months from date of receipt.



Flow Cytometry analysis of MFC cells using...



Flow Cytometry analysis of LLC cells using...



WB analysis using anti-VEGF Receptor 2 a...