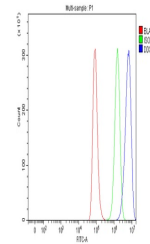


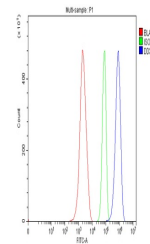
## Product Datasheet

### DDX3/DDX3X Antibody (orb402398)

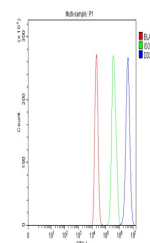
|                            |   |
|----------------------------|---|
| <b>Description</b>         | DDX3/DDX3X Antibody   |
| <b>Species/Host</b>        | Rabbit  |
| <b>Reactivity</b>          | Human, Mouse, Rat   |
| <b>Conjugation</b>         | Unconjugated  |
| <b>Tested Applications</b> | FC, ICC, IF, WB   |
| <b>Immunogen</b>           | A synthetic peptide corresponding to a sequence at the N-terminus of human DDX3 (2-28aa SHVAVENALGLDQQFAGLDLNSSDNQS), identical to the related mouse sequence.  |
| <b>Form/Appearance</b>     | Lyophilized   |
| <b>Concentration</b>       | Adding 0.2 ml of distilled water will yield a concentration of 500 µg/ml.   |
| <b>Storage</b>             | Store at -20°C for one year from date of receipt. After reconstitution, at 4°C for one month. It can also be aliquotted and stored frozen at -20°C for six months. Avoid repeated freeze-thaw cycles.                               |
| <b>Note</b>                | For research use only   |
| <b>Application notes</b>   | Tested Species: In-house tested species with positive results. Other applications have not been tested. Optimal dilutions should be determined by end users. . Add 0.2ml of distilled water will yield a concentration of 500ug/ml. |
| <b>Isotype</b>             | Rabbit IgG  |
| <b>Clonality</b>           | Polyclonal  |
| <b>MW</b>                  | 73243 MW  |
| <b>Uniprot ID</b>          | <b>000571</b>   |
| <b>Expiration Date</b>     | 12 months from date of receipt.   |



Flow Cytometry analysis of A549 cells us...



Flow Cytometry analysis of ANA-1 cells u...



Flow Cytometry analysis of C6 cells usin...