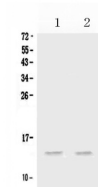


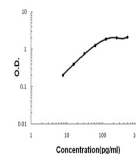
Product Datasheet

MIP-3 Alpha/CCL20 Antibody (orb402397)

Description	MIP-3 Alpha/CCL20 Antibody
Species/Host	Rabbit
Reactivity	Mouse, Rat
Conjugation	Unconjugated
Tested Applications	ELISA, WB
Immunogen	E. coli-derived mouse MIP-3 Alpha/CCL20 recombinant protein (Position: A28-M97).
Form/Appearance	Lyophilized
Concentration	Adding 0.2 ml of distilled water will yield a concentration of 500 µg/ml.
Storage	Store at -20°C for one year from date of receipt. After reconstitution, at 4°C for one month. It can also be aliquotted and stored frozen at -20°C for six months. Avoid repeated freeze-thaw cycles.
Note	For research use only
Application notes	Tested Species: In-house tested species with positive results. Other applications have not been tested. Optimal dilutions should be determined by end users. Add 0.2ml of distilled water will yield a concentration of 500ug/ml.
Isotype	Rabbit IgG
Clonality	Polyclonal
MW	14 kDa
Uniprot ID	O89093
Expiration Date	12 months from date of receipt.



WB analysis of MIP-3 Alpha/CCL20 using a...



Sandwich ELISA - Recombinant mouse MIP-3...